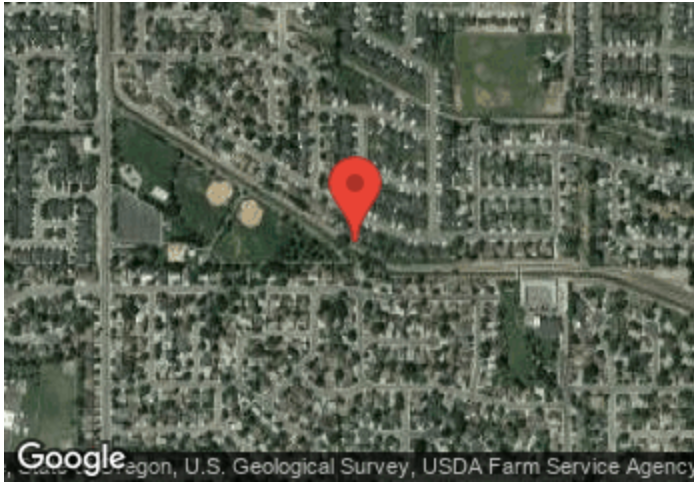


Meridian - Tully Park

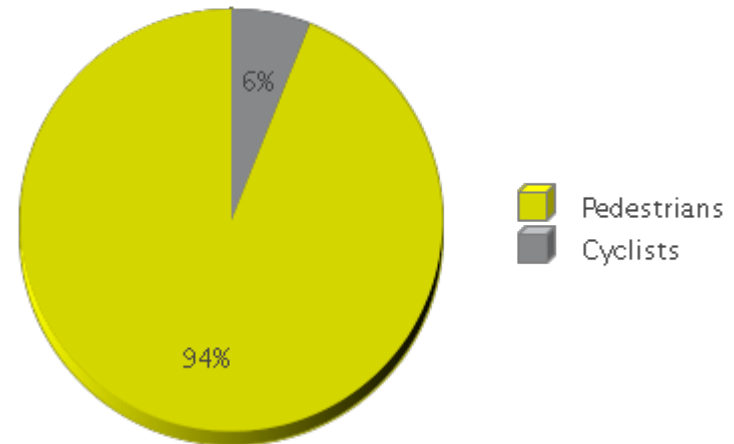
Period Analyzed: Friday, September 01, 2017 to Friday, March 01, 2019



	Total Traffic for the Analyzed Period	Daily Average	Busiest Day of the Week	Busiest Month of the Year	Distribution	
					IN	OUT
Pedestrians	383,243	718	Saturday	July 18: 97,047	90	10
Cyclists	24,680	46	Saturday	June 18: 3,644	60	40

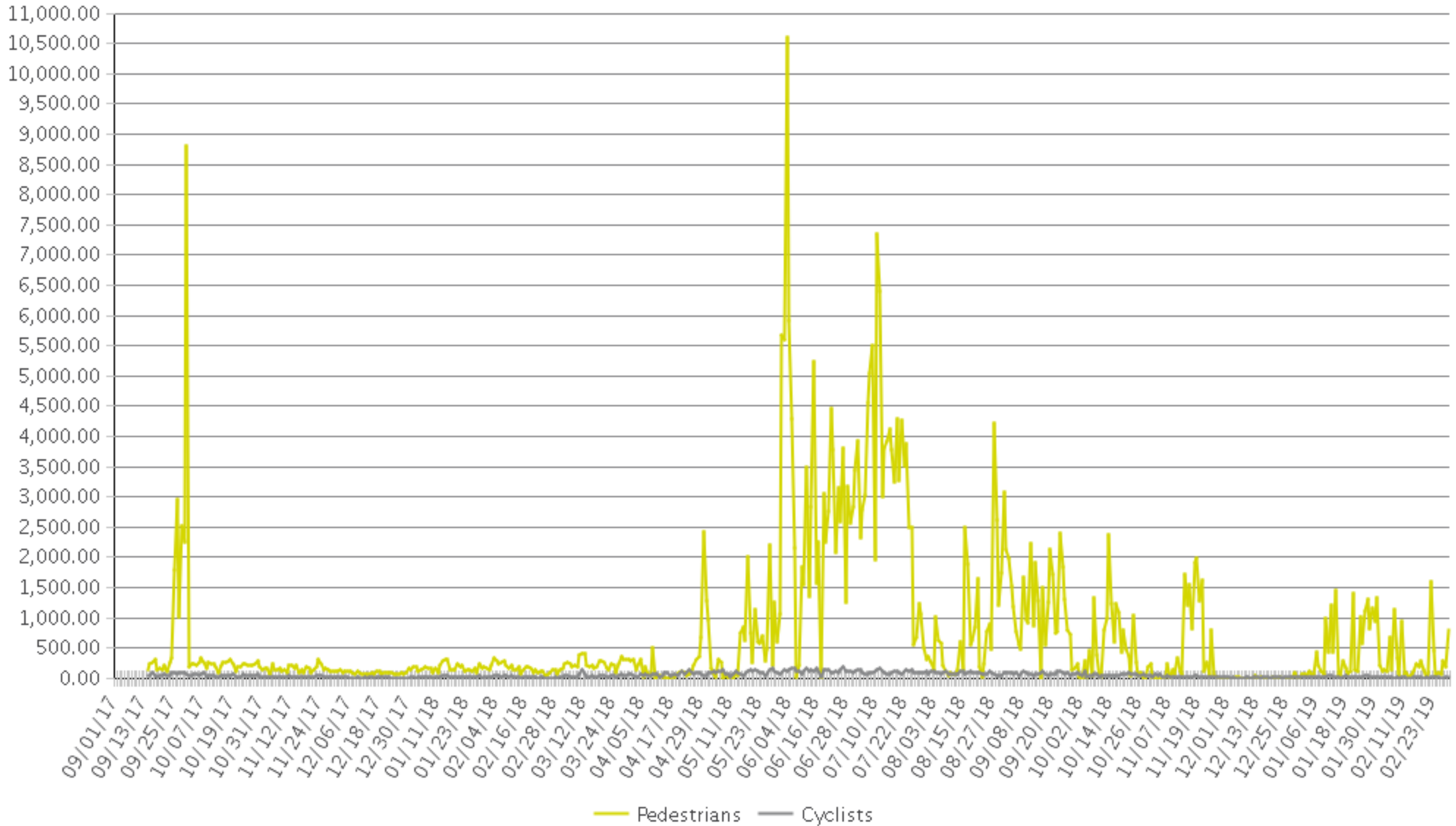
IN: In = West

OUT: Out = East



Meridian - Tully Park

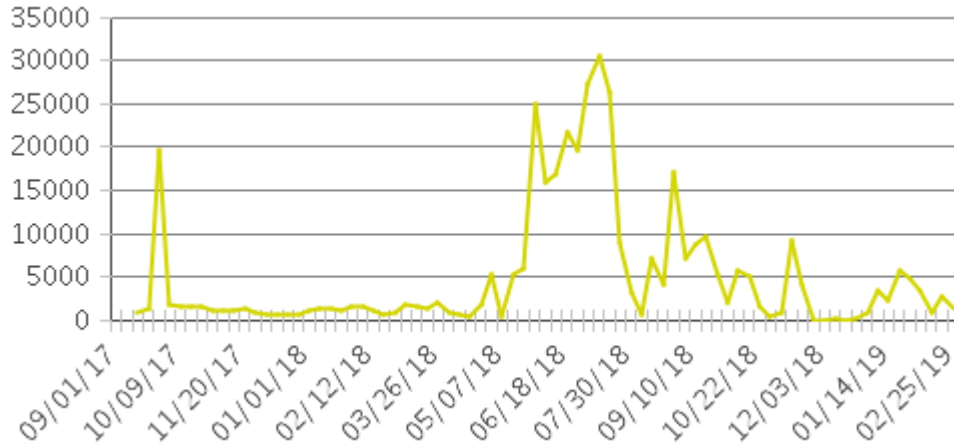
Period Analyzed: Friday, September 01, 2017 to Friday, March 01, 2019



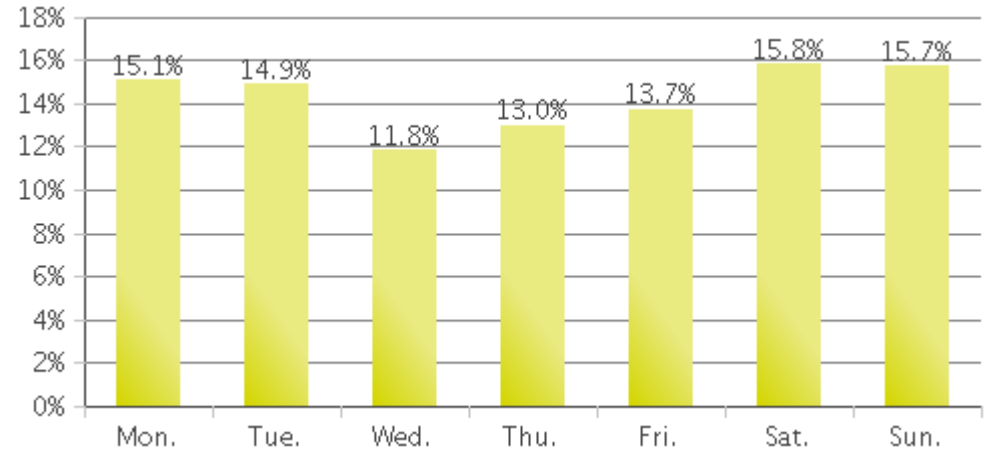
Meridian - Tully Park (Pedestrians)

Period Analyzed: Friday, September 01, 2017 to Friday, March 01, 2019

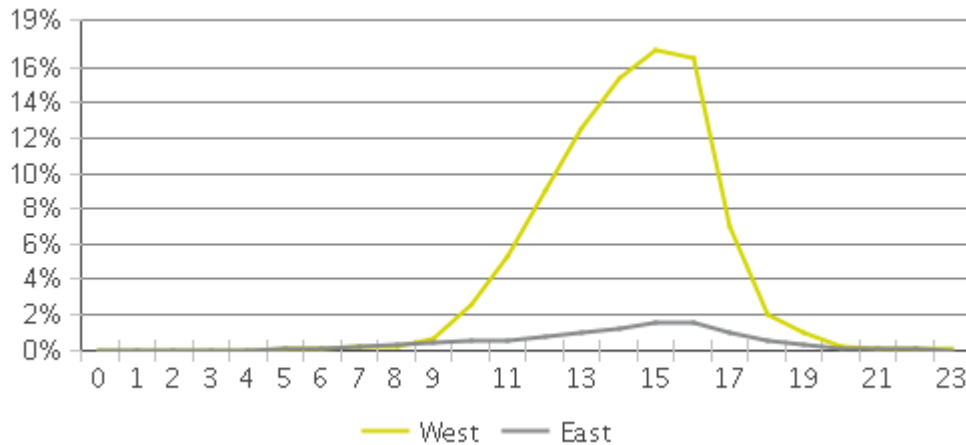
Weekly Traffic



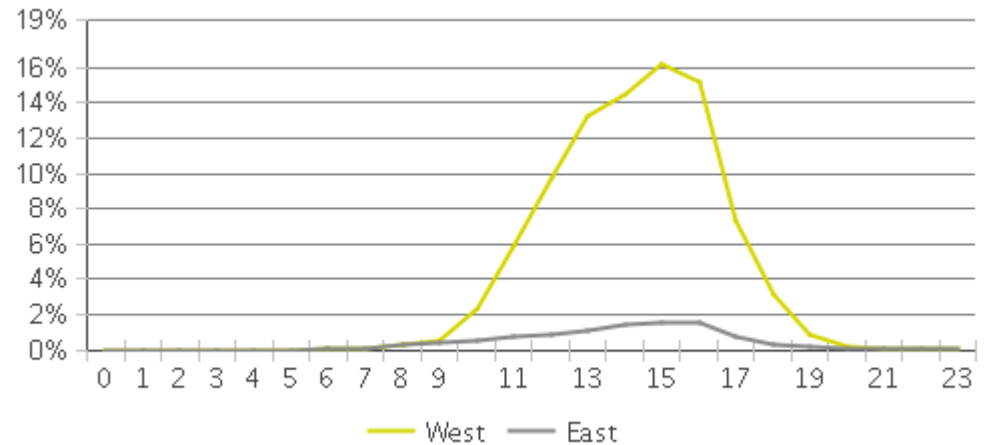
Weekly Profile



Hourly Profile during Weekdays



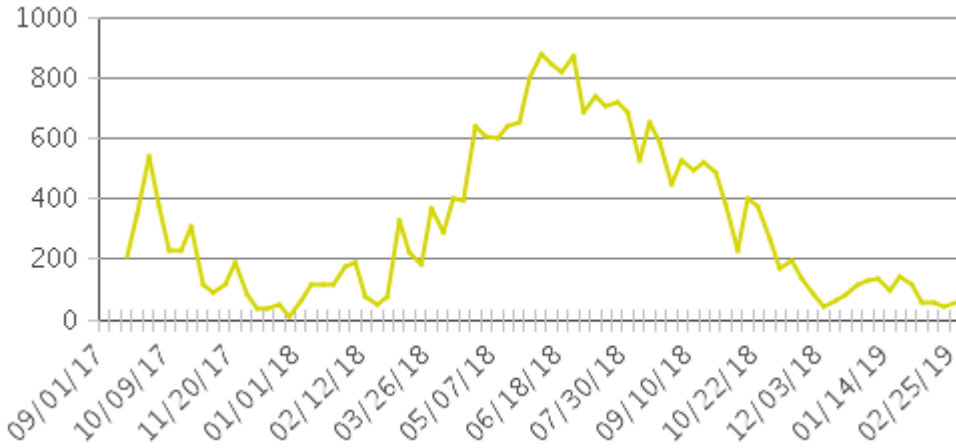
Hourly Profile during the Weekend



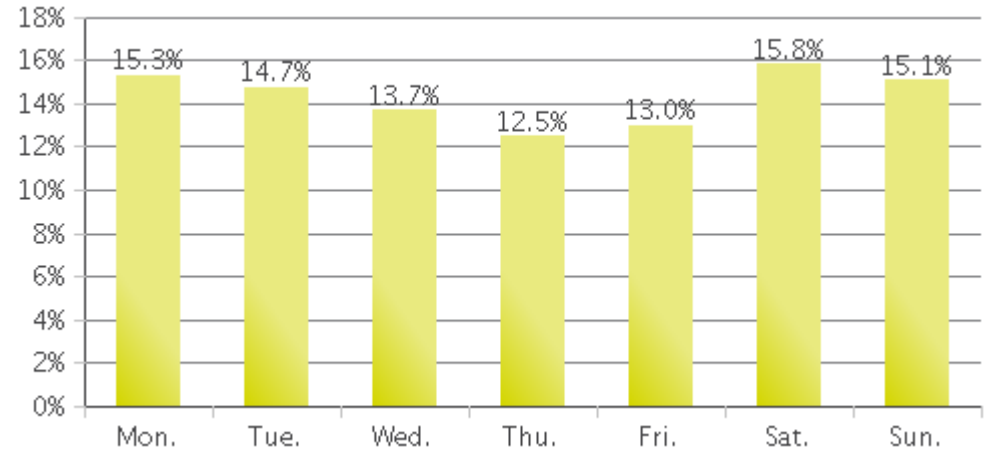
Meridian - Tully Park (Cyclists)

Period Analyzed: Friday, September 01, 2017 to Friday, March 01, 2019

Weekly Traffic



Weekly Profile



Hourly Profile during Weekdays



Hourly Profile during the Weekend

