



Idaho Walk Bike Alliance  
 720 W. Idaho St. Suite #46, Boise, Idaho 83702  
 208.345.1105

## Annual Report 2014

### 2014 Highlights, by Cynthia Gibson Executive Director:

This last year was highlighted by partnerships, community work and real change in Idaho. Early in 2014, Idaho Walk Bike Alliance (IWBA) changed its name and opened a small office in downtown Boise, which is now a block from the Statehouse allowing staff to walk or bike to our partners throughout the City.

IWBA partnered with *Idaho Smart Growth* and *Conservation Voters for Idaho* to travel the state, meeting with advocates and stakeholders about ways to improve walking and biking in their communities. IWBA's goal is to have sidewalks and bicycle facilities always included in Idaho road projects.

"The City of Bonners Ferry had to do something about Highway 95 which bisects our town. We had to find a solution for all road users, especially children walking to school. Idaho Walk Bike Alliance helped us find the technical assistance needed to take a broader look at all options so our city is safer and friendlier to its citizens and visitors. We could not have found a workable solution without IWBA and we are closer to that solution than we ever imagined."  
 David Sims, Director Boundary County Economic Development Council.

With our partners, IWBA released poll results showing that 77% of Idahoans believe Idaho would benefit from a more balanced transportation system, which includes transit, walking and biking. With the Sonoran Institute and our partners, IWBA helped bring eight Idaho communities to the Community Mobility Institute in Boise for three days of hands-on training in November. IWBA also



worked with Bonners Ferry to re-configure Highway 95 to be safe for all road users.

The Community Choices for Idaho federal grant program completed its second cycle and ITD received approximately \$11 million more in grant applications than available funds. IWBA continues to strongly advocate for this valuable program and we are excited to see new non-motorized infrastructure funded by these grants in communities throughout Idaho.



IWBA organized Boise's Walk To School Day in October. Participants included Boise City Council members, representatives of Idaho Transportation Department and Ada County Highway District, State Senator Chuck Winder, and U.S. Senator Jim Risch. A direct result was reduced speed limits and freshly painted crosswalks at two participating schools, as well as a new awareness of children's safety by our decision makers. At IWBA's request, Governor Otter proclaimed October 8, 2014 as Walk To School Day!

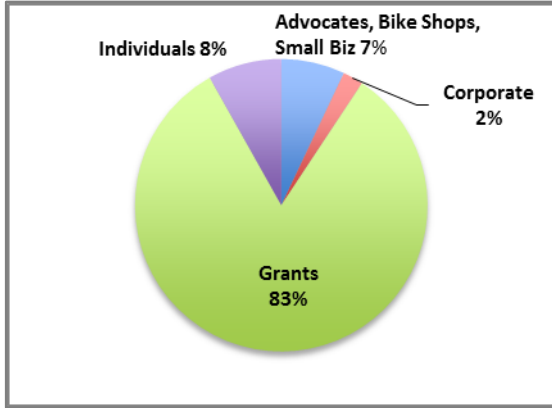
### Thanks to our 2014 Board of Directors

Molly O'Reilly - President, Sandpoint  
 Gary Segers - Vice President, Boise  
 George Knight - Treasurer, Boise  
 Chris Staley - Secretary, Idaho Falls

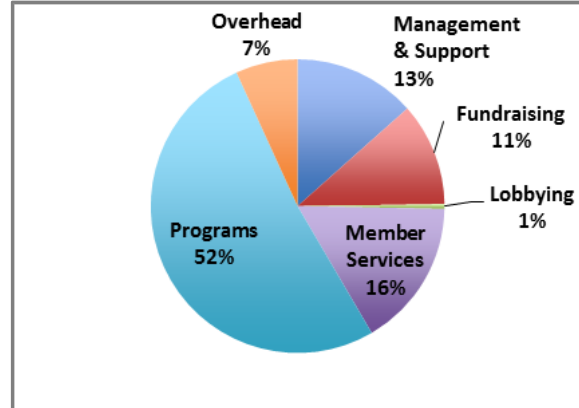
Nora Locken, Moscow  
 Bret Tinker, Boise  
 J. Patrick Riceci, Boise  
 Monte McCully, Coeur d'Alene

Walking. Biking. Going Places.

**2014 Income: \$95,074**



**2014 Expenses: \$96,622**



**Our generous donors made our successes possible – THANK YOU!**

**Major Donors (\$250+):**

Race To Robie Creek	Payette Brewing Company	Jan & Gordon Locken	Michael Gridley
Fit 4 Life Half Marathon	Citizens For An Open Greenbelt	Kittelson & Associates	Edward Jones
JIGGS	Philip S. Cook	Kurt Holzer	N. Idaho Centennial Trail
Molly O'Reilly & Steve Lockwood	Boise Co-Op	Pend Oreille Pedalers	
The Gridley Family Foundation	Gary L. Smith	Power Engineers	
The Equinox Foundation	HDR, Inc.	Tom Foerstel	

**Donors:**

Annabeth Elliott	Foot Dynamics	Kimberlee Lafferty	Robin & Steve Piet
Becky Chastain	Gary Segers	Kip Burden	Rocky Bogert
Beverly Moss	George C. Knight	Lactic Acid Cycling	Roger & Alane Blanchard
Bike Walk Nampa	George Redden	Lala Chambers	Ron Landeck
Biz Print	Gravity Sports	Latah Trail Foundation	Russell J. Miller
Bret Tinker	Greasy Fingers Bikes N Repair	Margie Savitzky	Sanford Thomas
Cheryl & Tom Cox	H.W. Lochner	Marie & Bob Tyler	Sarah Church
Chris Staley	Harry Hurt	Mary Glen	Sheilah Prevost
Christopher Bier	Idaho Falls Community Pathways	Melissa Davis	Shirley Atteberry
City of Moscow	Idaho Mountain Touring	Melissa Wintrow	Stephani Hilding
City of Potlatch	J. Patrick Riceci	MickDuff's Brewing Co.	Susan Drumheller
Conservation Voters for Idaho	Jacob Styer	Mike Stanfancic	Susanne Miller
CTAI	James R. Hall	Nancy & David Nelson	Teton Valley Trails & Pathways
Cynthia Gibson	Janet & Russell Buschert	Nancy Chaney	Tim Adams
David Hume	Jay Krajic	Nora Locken	Timberline Investments
David Peckham	Jeff & Sam Forbes	North Idaho Bikeways	Tom Mouser
Davis Straub	Jim Prall	Paradise Path Task Force	Vacasa
Deanna Smith	Joe & Patty Bellin	Patricia Heldt	Valerie Connor & Dennis Gann
Doug Eastwood	Joe Bruce	Paul Cunningham	Vern Owens
Douglas Ball	John Christensen	PortaPros, LLC	Vitruvian Planning
Duncan Nims	Jon Kimberling	Randy Haddock	Wallace Inn
Eileen Atkisson	Joseph H. Groberg	Reed Cycle	William & Susan Eastlake
Elaine & Brett Clegg	Julie & Martin Trail	Renee & Patrick Miller	William Thomson
Elizabeth Thebaud	Kendria C. Cada	Robert Pitts	
Erik Kingston	Kevin McDonald	Robert & Judy Secrist	
Fitzgerald's Bicycles			

**In Memoriam:** Beloved IWBA members W.G. Atteberry and Harvey Pine, passed in 2014. We honor their passion for safe streets for walkers and bicyclists.

Walking. Biking. Going Places.